



Skype
for Business

SFB 認證IP話機





440HD IP Phone



430HD IP Phone



420HD IP Phone



405 IP Phone*

完整整合微軟通訊平台

BLF 顯示人員線上狀態
(430/440HD model)

“Better Together” support
over Ethernet

簡單、安全的登入

Skype for Business 聯絡人
可顯示於LCD速撥螢幕上
(440HD model)

HD VoIP

支援USB 耳機
(430/440HD models)

獨有的生命周期管理
解決方案

老闆-秘書功能
(430/440HD models)

One Voice Resiliency
support

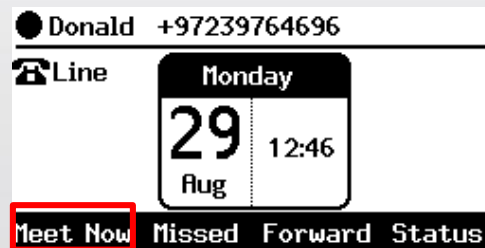


- 高品質 5”吋觸控彩色螢幕(主螢幕與延伸模組)
可接3組延伸模組
內建藍芽
- 主螢幕:
 - 5” TFT 800xRGBx480
- 延伸模組Expansion unit:
 - 5” TFT 480xRGBx854

- **Online sign-in – connectivity to Office 365.**
 - New capability to **sign in to (connect to) and authenticate with Microsoft's Cloud PBX**, Microsoft's cloud-hosted version of enterprise voice.
 - AudioCodes' phone features two new sign-in method options, allowing users to connect to Microsoft's Cloud PBX:
 - • ADAL (Azure AD Authentication Library) that is based on OAuth 2.0 (RFC 6749). The phone always starts with ADAL and if it's unavailable on the server side, the phone moves to OrgID.
 - • OrgID (Organizational ID) or LiveID is Microsoft's proprietary connectivity to Cloud services.



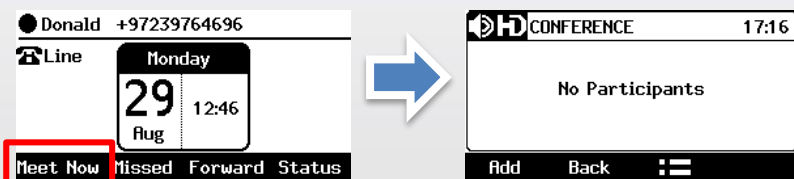
- new **Meet Now/Conf** softkey is displayed by default in the 400HD phones. The softkey allows users to easily initiate remote multi-party Skype for Business conference calls.



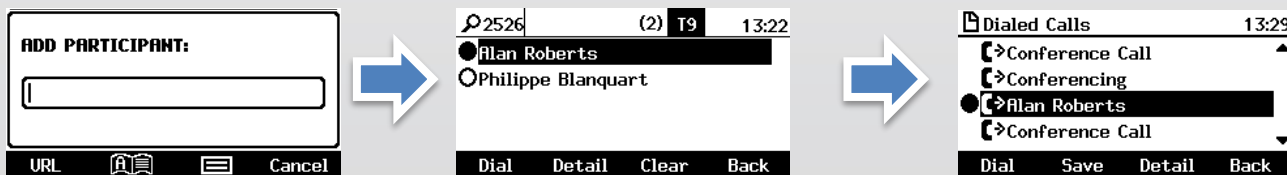
- By pressing the new softkey, users can initiate, join or be added to a multi-party conference call while having full control and viewing capability.
 - View the Roster – see other participants and their status (like the Mute option, Hold status)
 - View the conference PSTN dial-in number and conference ID
 - Mute/Unmute other participants
 - Manage the conference status as Lock/Unlock
 - Manage the Lobby for Conference calls that Lobby is defined – Admit/Deny other participants
 - Presenters in a conference can add users to the conference
 - Presenters in a conference can remove users from the conference
 - Presenters in a conference can change the role of a participant between 'presenter and attendant'

Initiating a Multi-Party Skype for Business Remote Conference

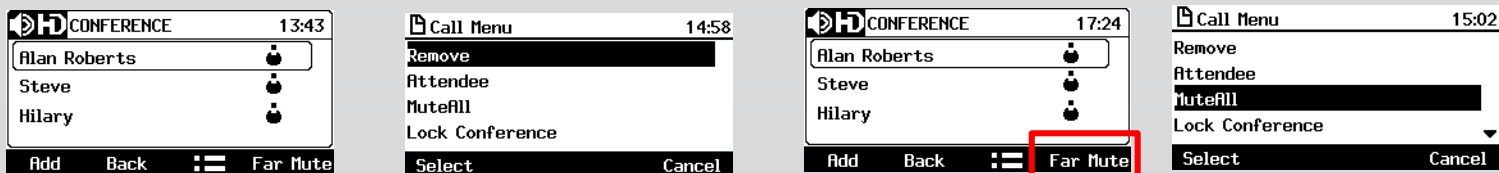
1. In the phone's idle screen, press the **Meet Now** softkey; the CONFERENCE screen opens indicating **No Participants**.



2. Press the **Add** softkey; the ADD PARTICIPANT screen opens (can search favorite contacts or Corporate Directory)

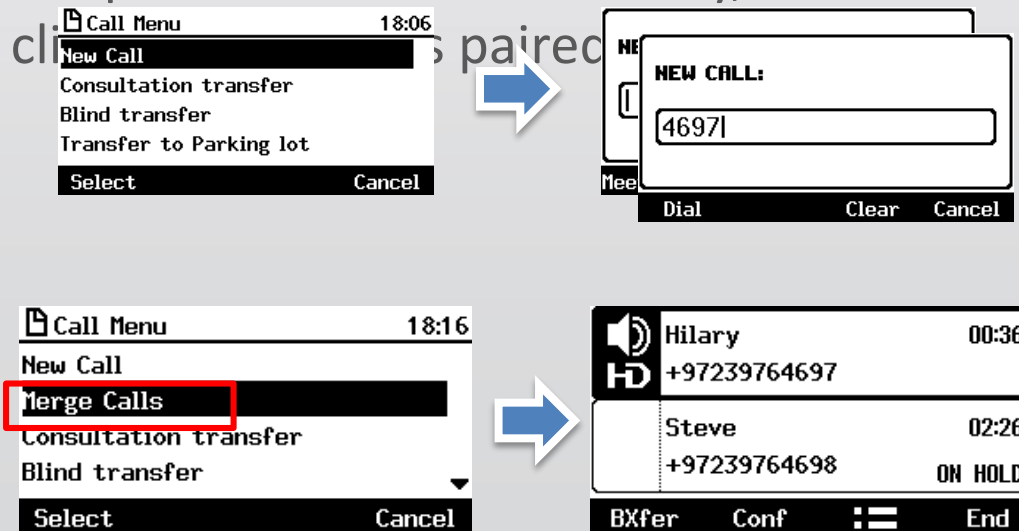


3. View the participant in the meeting / remove participant / Mute Single/all participant



■ Merging a call into a conference.

- Two separate calls can now be merged into one conference call. This can be performed via a new **Merge** option accessed from the phone's **Call Menu** softkey, or via the Skype for Business

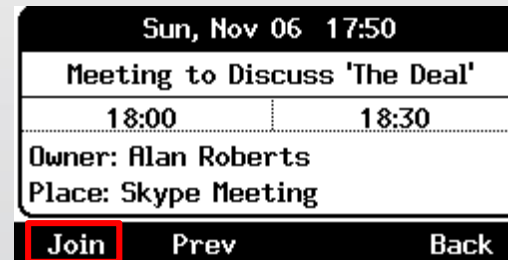
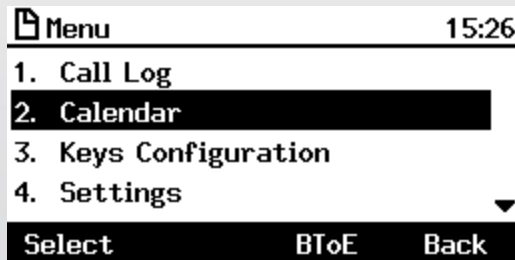


1. While in a call with Steve, you (Donald) decide you want to add Hilary to the conversation. Press the softkey and then select **New Call**.

2. In the New Call field, enter Hilary's number and press the now-enabled **Dial** softkey.

3. When Hilary answers, press the softkey and then select **Merge Calls**; all three of you are now in the conversation

- **Integration with Microsoft Exchange Server (Calendar) + click to join a Skype for Business meeting.**



Join the SfB meeting with Join softkey

Meeting Reminder :

The phone automatically pops up meeting reminders for meetings defined as Skype for Business meetings. Meeting reminders pop up in the phone's idle screen at the time defined for them in the meeting invitation



BToE - Automatic Pairing :

- Pairing is now *automatically* performed when the phone's PC port is connected to the PC/laptop 'behind' the phone



BToE - Support for video calls :

- When a video call comes in, video is displayed on the PC/laptop, voice is routed to the phone.



BToE - Switching between audio devices.

- Users can switch back and forth between audio devices.



Phone Automatic lock.

- The Skype for Business phone now supports the capability to automatically lock after a preconfigured period of time.



Locking / unlocking a paired phone:

- If a user's phone was automatically paired (by connecting its PC port to the PC/laptop 'behind' it) and if the PC/laptop is active (not locked), the phone cannot be manually locked.



Capability to handle multiple calls - N Concurrent calls (NCC).

- The phone is capable of managing **up to 8 concurrent calls per line**



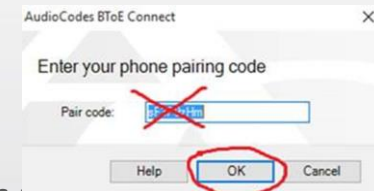
Device Update.

- The Skype for Business server can update the IP phone firmware version.



Quality of Experience (QoE)

- reports are now sent to Microsoft's SQL server.



- **Add Statistics in the Dashboard**
 - Number of users per Region.
 - Number of devices per model.
 - Number of devices per firmware.

