



# AudioCodes CCE HUB Solution

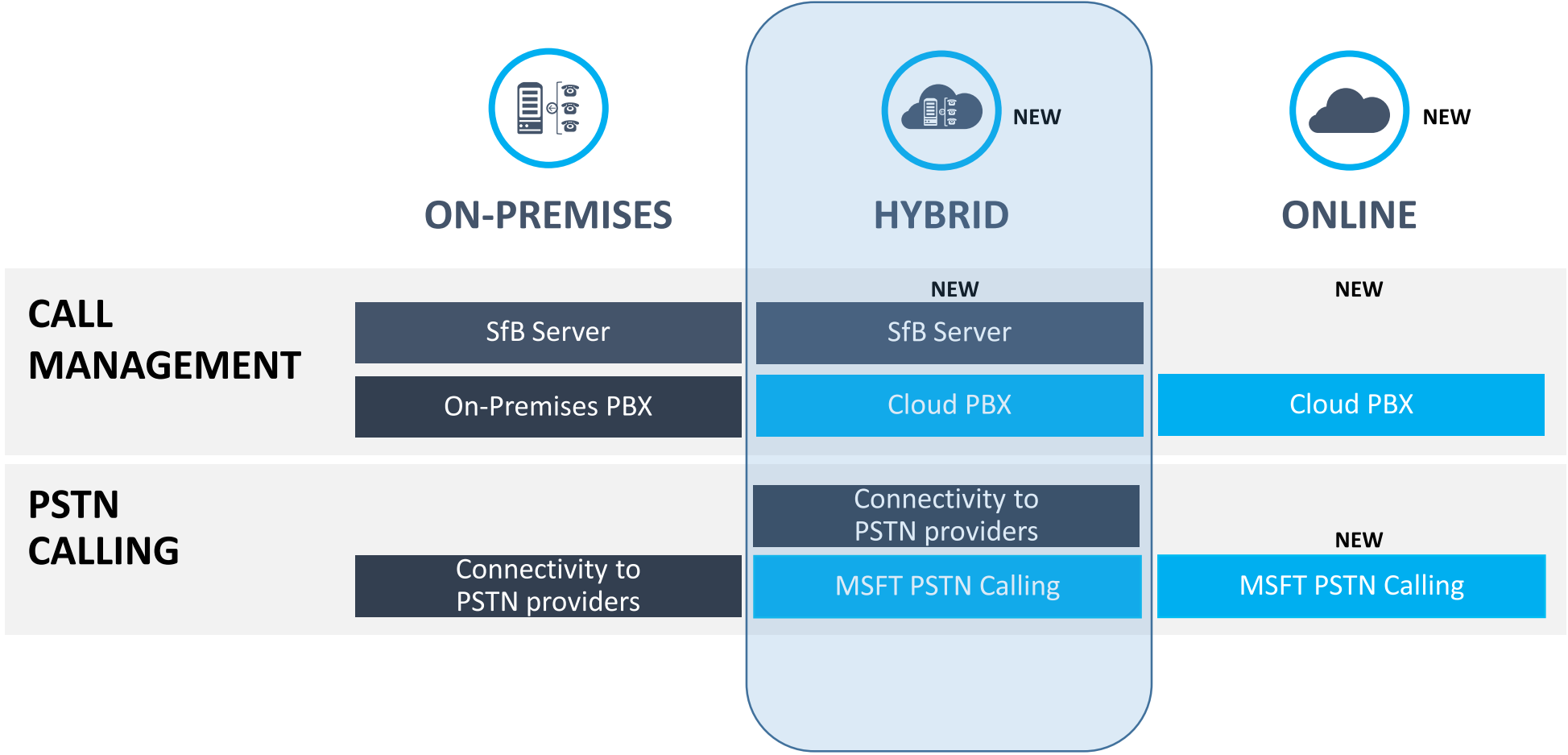
More Flexibility - Less Infrastructure





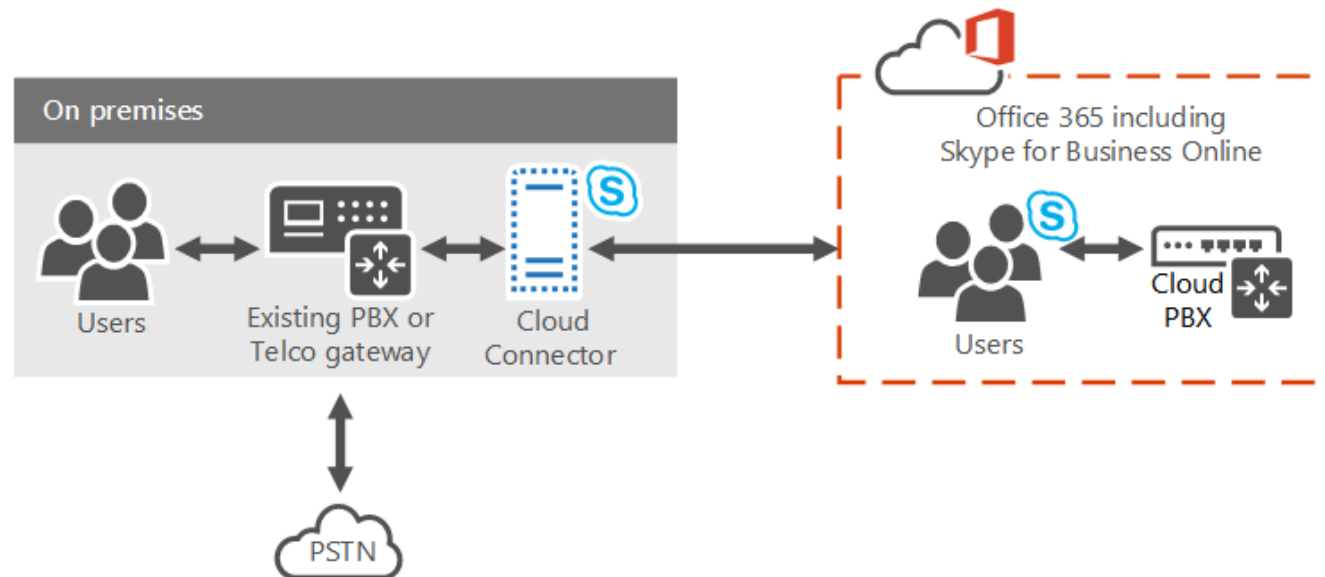
# CCE HUB Introduction

# Microsoft offers multiple enterprise voice deployment options



# What is Microsoft Cloud Connector Edition?

- **Cloud Connector** is a set of packaged Virtual Machines (VMs) that implement hybrid PSTN connectivity with Cloud PBX.
- **This hybrid offering** is designed for organizations that want to enable their Skype for Business Online users to use their existing on-premises PSTN connection or connect to legacy on-prem IP-PBXs/PBXs, with Skype for Business call control in the cloud

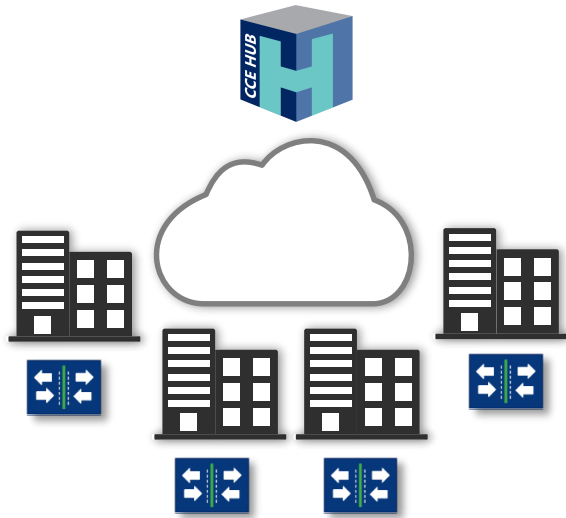


# Introducing the AudioCodes CCE HUB Solution

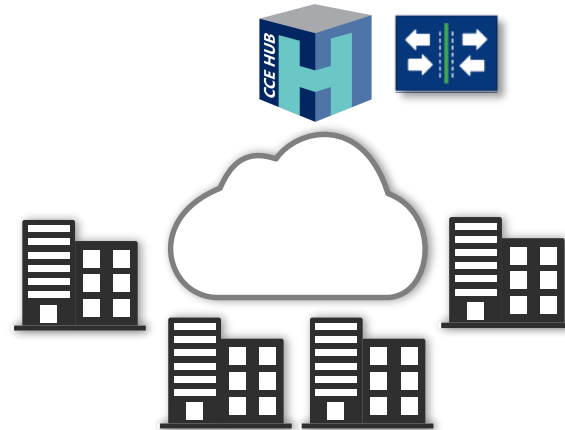
- Innovative, standards based solution designed to reduce the infrastructure cost, remove complexity, and deliver outstanding voice quality in multi-site Cloud Connector Edition deployments
- Leverages centralized CCE deployment option to deliver:
  - High reliability
  - Unlimited scalability
  - Centralized management
  - Outstanding voice quality
  - Lower total cost of ownership



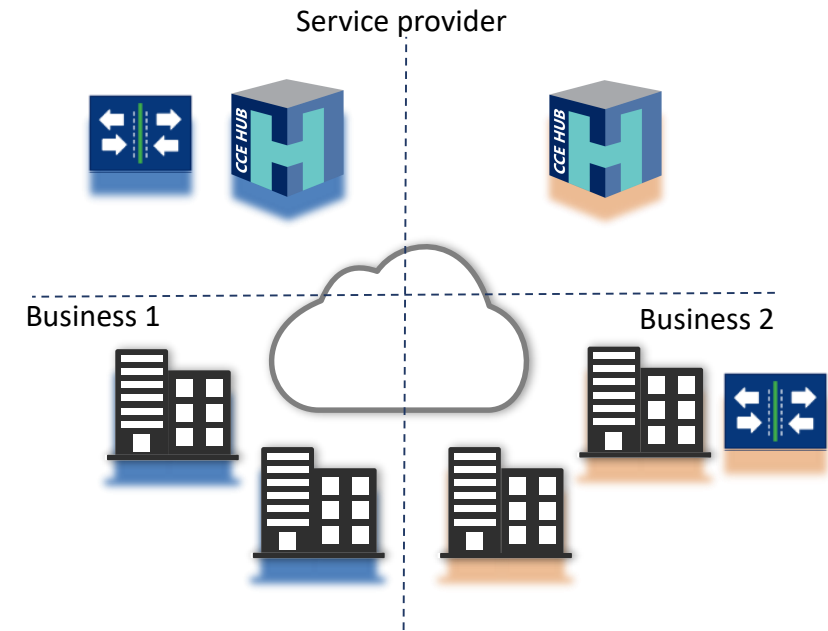
## Distributed breakout interfaces



## Centralized breakout interface



## Managed solution with distributed or centralized breakout interfaces



# Solving real world challenges

## **Current Challenges with distributed CCE appliances:**

- Routing control / dial plan complexity
- Costly multi-site deployment and operations
- Remote sites need local breakout for PSTN/connecting with a local PBX
- Infrastructure / telco cost – per site
- Limited survivability
- Limited support for emergency calling
- Inefficient voice traffic

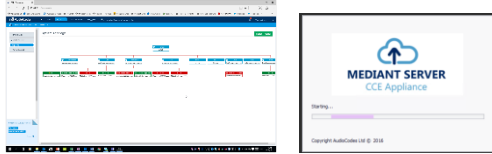
## **Solution Benefits with AudioCodes CCE HUB solution:**

- Centralized Control and Management
- Support Least Cost routing
- Support migration and co-existence
- Lower Operational Expenses
- Reduced per-site footprint
- Reduced Telco Costs
- Improved Availability / Performance
- Dynamic 911 support
- Survivability



## AudioCodes CCE HUB Solution components





- Wizard.... And Dashboard



- AudioCodes SBC and Gateways for interfacing SIP Trunks and PSTN



- AudioCodes ARM for centralized end-to-end routing flexibility

- OVOC



- IP Phones

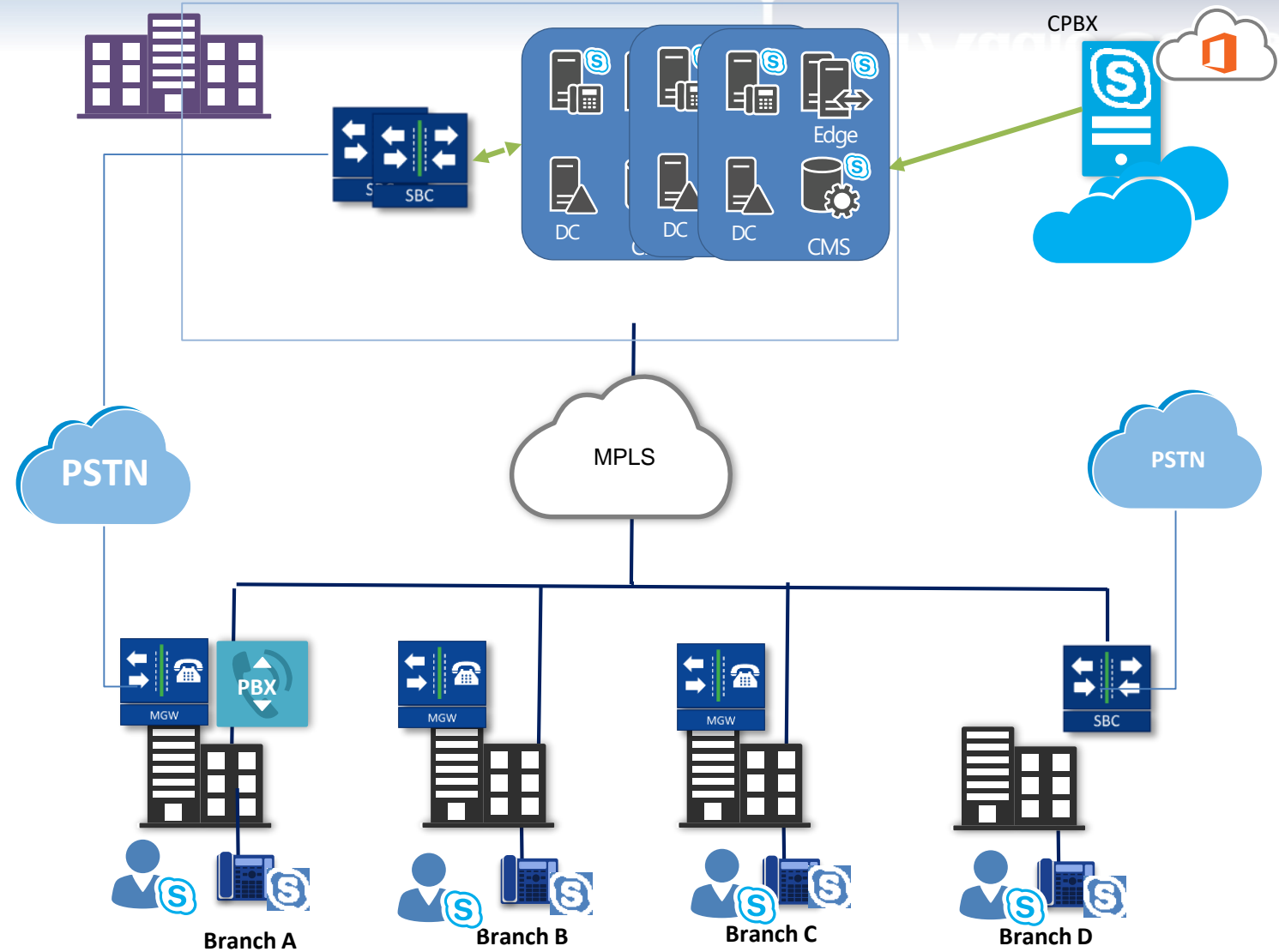


- Analog gateways for connecting analog devices such as faxes, doorbells, etc

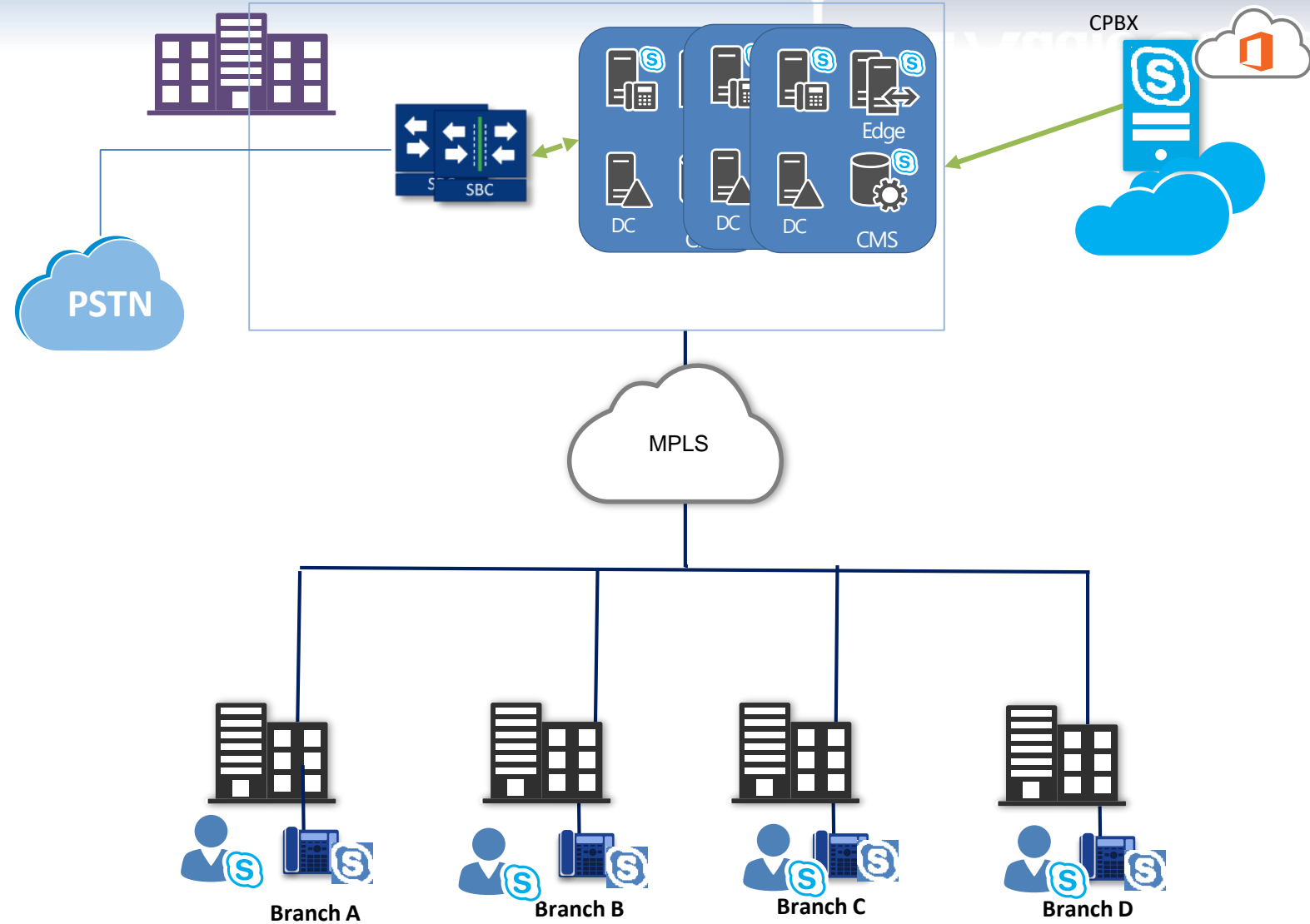


## CCE HUB deployment types

- CCE HUB in a Centralized data center
- Centralized SBC for main SIP Trunk connection
- Local Breakout at the branches
  - PSTN breakout
  - PBX/IPBX connection



- CCE HUB in a Centralized DC
- Centralized SBC for SIP Trunk connection
- Branch
  - IP-Phones
  - Clients



- Centralized solution for Service Providers Serving multiple customers
- Sharing SBC, ARM and OVOC

