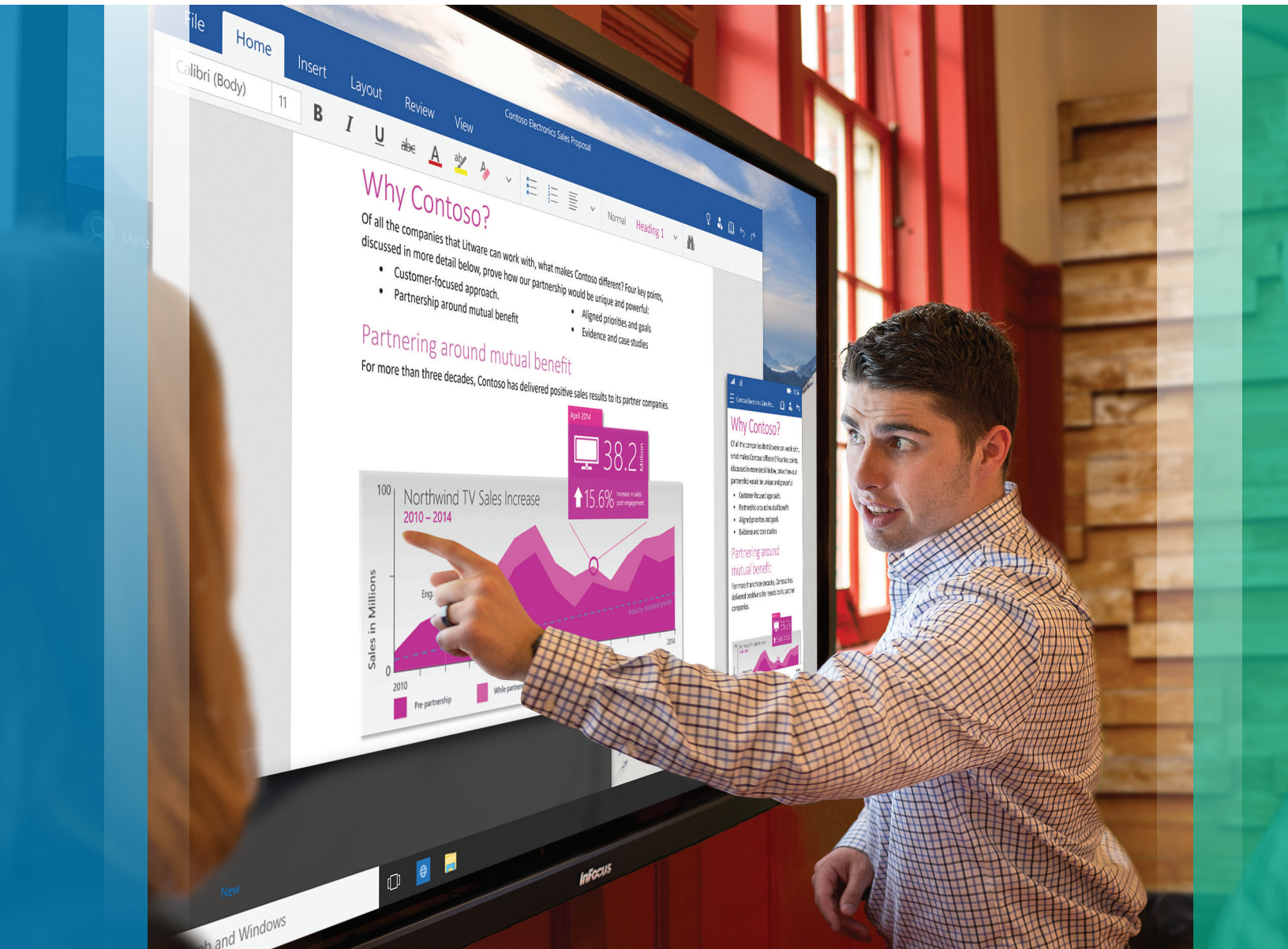


The giant all-in-one touch PC that demands an audience



# BigTouch

BigTouch combines the fun of a tablet with the productivity of a PC in a giant, fast, and fluid touch experience for your classroom or other shared work space.

## Key Features

- Incredibly sharp 4K or 1080p resolution
- Powered by Windows 10 Pro
- Available with ultra-responsive capacitive touch
- Run all your Windows apps, even the older ones, in touch mode
- Highly customizable for your needs and your PC applications
- Intel Core i7 processor and fast solid state hard drive
- Wireless mouse and keyboard included

## The Power of a PC at Your Fingertips

Maximize the touch experience on a large scale by adding the power of a PC with the InFocus BigTouch.

- Multi-touch display with intuitive Windows gestures to interact with your content
- Personalize the Start screen with tiles that connect to a person, app, website, folder or whatever else is important to you
- Familiar Windows desktop that you've used before
- Use your apps, get more apps in the Windows Store, and arrange them all the way you want
- Multi-task by snapping two apps side-by-side
- Enhanced features to easily connect to your networks, access files in the cloud, encrypt data, and more

## The Tablet Experience...Magnified

Tablets are fun. Touch is intuitive. The InFocus BigTouch employs a beautiful display that allows that enjoyable experience, and your content, to be seen and shared.

- Brilliant 4K or 1080p HD displays show off your content with incredible brightness, color and clarity
- Multi-touch screen delivers exceptionally accurate touches, swipes and gestures
- Windows gestures such as tap, slide, swipe, pinch, and rotate can be used to get a global view of everything on the screen and slide back and forth to find what you're looking for
- Wireless keyboard and mouse also included to easily control the display from your seat



### INF5711

57"  
1080p  
Windows 10 Pro

### INF6512

65"  
1080p  
Windows 10 Pro

### INF7012

70"  
UHD 4K  
Windows 10 Pro

### INF8511

85"  
UHD 4K  
Windows 10 Pro

## Powered by Windows 10

BigTouch is built on Windows 10, offering the performance and flexibility you need for all of your applications. Windows 10 provides an elegant interface that leverages familiar aspects of previous Windows operating systems so that everyone can intuitively use it, plus new features that you'll love.

- The Windows Start menu is back in an expanded form, so you can dive in immediately
- New Battery Saver feature automatically conserves power



## Bring Your Display to Life with 4K

BigTouch now offers 4K resolution in several panel sizes for an incredibly sharp, vivid picture. Boost the impact of your content and make every meeting or presentation more engaging, informative, and memorable with 4K.

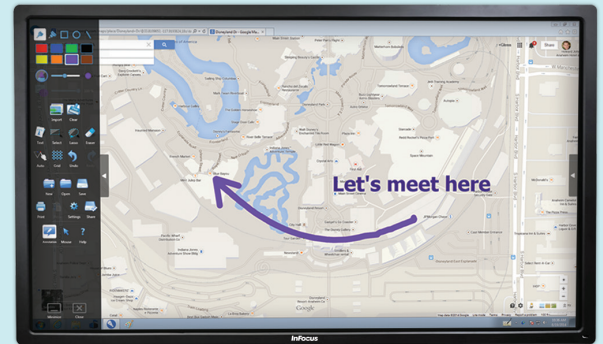
- More pixels mean more detail and depth for amazingly life-like images
- Enhanced color rendering
- Presenters benefit from crisp, clear images up close
- Audiences enjoy vibrant, detailed images, even from the back of a conference room

## Whiteboard Like a Pro

Add our optional BigNote whiteboarding app to turn your BigTouch into the best digital whiteboard available.

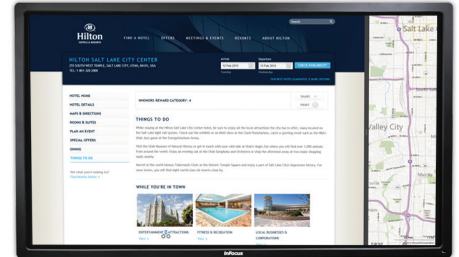
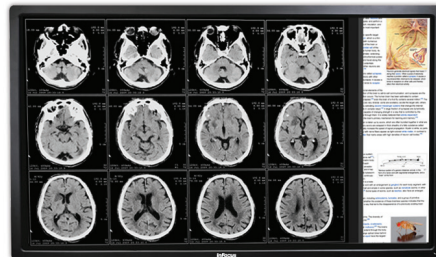
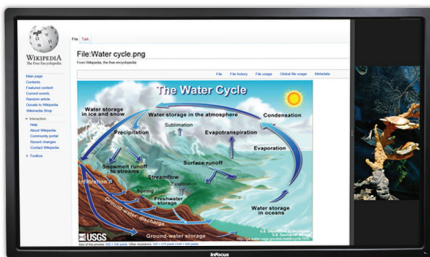
- Wide assortment of pens, colors and shapes
- Whiteboard on up to 10 square feet of space
- Annotate on screen and save the changes
- BigNote files are cross-compatible with Mondopad's whiteboard app

[BigNote software \(INS-BIGNOTE\) pictured here.](#)



## How Would You Use Your BigTouch?

The form factor of BigTouch combined with the user experience and flexibility of a Windows PC means its use is only limited by your imagination.



### Education

Higher education and primary and secondary schools can benefit from BigTouch in administrative offices or in the classroom. Its bright, engaging display keeps students' attention and Windows 8 is intuitive and familiar for students, staff and IT.

- In classrooms for giving and preparing lessons
- Access and display content from the web and the cloud
- In administrative offices as a shared PC
- Flexible and secure for IT to manage

### Medical

The high definition display and ease of use of BigTouch make it a great fit for hospitals, clinics, labs, and administrative offices.

- In waiting rooms for education and/or self service
- For accessing and analyzing information, such as imaging
- For patient education, such as explaining imaging, video, and other patient care info
- At nursing stations as a shared PC

### Hospitality

Hotel lobbies can greatly benefit from BigTouch to help their guests help themselves.

- Learn about the hotel's amenities
- Browse maps of the hotel and of the surrounding area
- View hotel restaurant menus and make reservations
- Find fun things to do at the hotel and in the area

# Specifications\*

PC	INF5711	INF6512	INF7012	INF8511
Processor	Intel® Core i7-4770T, Q87 chipset	Intel® Core i7-6700T, Q170 chipset		
Memory	8 GB of RAM			
Hard Drive	SSD 120GB	SSD 256GB		
LAN (2x)	802.3 10/100/1000 Base-T with Wake on LAN			
Wi-Fi	Dual band 802.11 a/b/g/n MIMO PCIe half mini card, 2.4 GHz with Intel, AMT support			
Input Connections	USB 3.0 Type-A x2 (on PC), Ethernet (RJ45 x 2), 3.5mm audio input (stereo)			
Output Connections	HDMI out	DisplayPort 1.2 out		
Bluetooth	4.0			
Operating System	Windows 10 Pro			

## DISPLAY

Size	57" diagonal	65" diagonal	70" diagonal	85" diagonal
Resolution	Full HD (1920 x 1080)		4K (3840 x 2160)	
Refresh Rate	120 Hz			
Viewing Angle	176°	178°	176°	
Technology	LED edge-lit LCD			
Video Input Compatibility	Full NTSC, 480i, 480p, 720p, 1080i, 1080p		Full NTSC, 480i, 480p, 720p, 1080i, 1080p, 4K	
Data Input Compatibility	VGA (640x480), SVGA (800x600), XGA (1024x768), SXGA (1280x1024), SXGA+ (1400x1050), UXGA (1600x1200), WXGA+ (1440x900), WSXGA+ (1680x1050), WXGA (1280x800), WUXGA (1920x1200)			
Input Connections	HDMI x 2, VGA (HD15 VESA), RS232, 3.5mm stereo mini-jack, RCA stereo audio in, 3.5mm line-in audio (mono), USB Type-A x5 (4 on front, 1 on top), USB Type-B (for touch control)	HDMI x 4, VGA (HD15 VESA), component, RS232, 3.5mm line-in audio (mono), RCA stereo audio in, 3.5mm microphone in, USB Type-A x5 (4 on front, 1 on top), USB Type-B (for touch control)	DisplayPort 1.2, HDMI 2.0 x2 (rear), HDMI 1.4 x2 (rear and front), VGA, component, 3.5mm line-in audio (mono), RCA stereo audio in, RS232 serial, USB Type-A x5 (4 on front, 1 on top), USB Type-B (for touch control)	Rear: DisplayPort 1.2, HDMI 2.0 x2, HDMI 1.4, VGA, Component, 3.5mm line-in audio (mono), RCA stereo in, RS232 serial, USB 2.0 Type-B (for touch control) Front: USB 3.0 Type-B (for touch control), USB 3.0 Type-A x4, HDMI 1.4 Top: USB 3.0 Type-A (used by camera)
Output Connections	RCA audio stereo (L/R) out			
Touch Screen	Edge-to-edge quad camera multi-touch system with support for 5-point Windows gestures	Edge-to-edge 10-point projected capacitive touch		Edge-to-edge quad camera multi-touch system with support for 10-point Windows gestures
Speakers (Integrated)	Stereo 7W x2	Stereo 10W x2		Stereo 7W x2
Mount	VESA standard 400 x 400 mm, M8 screws			VESA standard 400 x 600 mm, M8 screws
Power	AC 100 to 240V, 50/60Hz			

## SYSTEM

Accessories Included	Wireless keyboard (where allowed), wireless mouse (where allowed), cleaning cloth, VGA cable, USB cable, security screws with removal tool, power cord, remote control, quick setup guide, feet/table stand assembly (feet only included with INF5711)			
Warranty	1 Year			
Product Weight	125.5 lbs / 57 kg	123.5 lbs / 56 kg	108 lbs / 49 kg	232.6 lbs / 101.5 kg
Product Dimensions	54.5 x 3.5 x 33.6 in / 1384 x 89 x 853 mm	59.8 x 3.2 x 35.3 in / 1520 x 81 x 896 mm	64.2 x 4.2 x 37.9 in / 1629.8 x 106.6 x 963.3 mm	78.3 x 4.4 x 46.7 in / 1988 x 112.1 x 1186 mm
Shipping Weight	154 lbs / 70 kg	154.5 lbs / 70.1 kg	147.7 lbs / 67 kg	264.6 lbs / 120 kg
Shipping Dimensions	63.5 x 10 x 42.5 in / 1613 x 254 x 1080 mm	69 x 10.6 x 44.4 in / 1752 x 270 x 1128 mm	73.2 x 10.2 x 46.5 in / 1860 x 260 x 1180 mm	88.1 x 12.2 x 56.2 in / 2239 x 311 x 1427 mm
Operating Conditions	41 to 95°F at 0 to 10K ft / 5 to 35°C at 0 to 3,048 m			
Noise	<40dBA @ 77°F / 25°C			
Energy Star	5.1 for display and PC			

\* Product specifications, terms, and offerings are subject to change at any time without notice.

## Accessories

BigNote Whiteboard Software (INS-BIGNOTE)

Mondopad Upgrade Kit (INSMWPWINBSW)

RealCam Pan/Tilt/Zoom Camera (INA-PTZ-3)

Camera with Microphone Array (HW-CAMERA-2)

Soundbars (HW-SOUNDBAR-4)

Wall Mount (INF-WALLMNT2, INF-WALLMNT3)

Floor Stand for INF5711 only (INF-FLRSTND)

Mobile Carts (INF-MOBCART, INF-MOBCARTPRO-B, INF-MOBCARTPRO-S, INF-MCART-PL)

Deluxe Mobile Cart with PTX Mount and Accessory Shelf (INA-MCARTDX)

Lift Assist Mounts (INA-MNTBB70, INA-MNTBB95)

Floor Support for Lift Assist Wall Mount (INA-SUPPORTBB)

Mobile Cart for Lift Assist Mount (INA-CARTBB)

VESA Interface Bracket (INA-VESABB)

Extended warranties:

57-inch (EPWPRE57BT1, EPWPRE57BT2)

65-inch (EPWPRE65BT1, EPWPRE65BT2)

70-inch (EPWPRE70BT1, EPWPRE70BT2)

85-inch (EPWPRE85BT1, EPWPRE85BT2)